



Bayview 19



Address

310 Litchfield Drive Iluka Views Estate

Lot Width

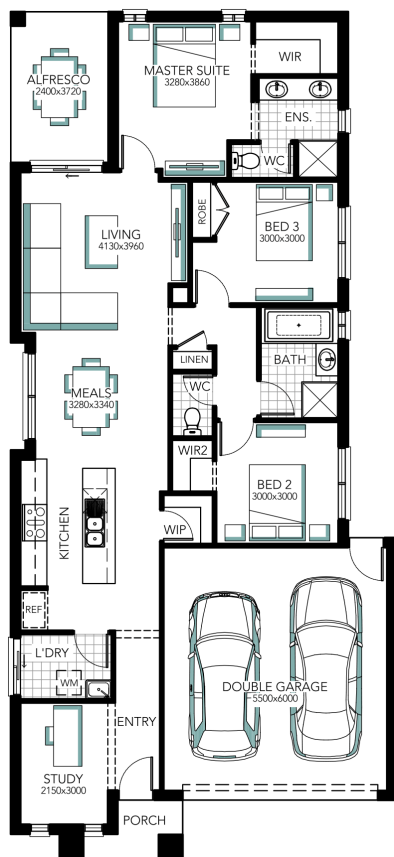
12.00

Lot size

977.00 m²

House size

173.53 m²



Your Inclusions

- Enjoy the luxury of Essastone to your kitchen benchtops
- Beautiful Beaumont Tiles to your wet and dry area tiling
- Your home will stay cosy and warm with ducted gas heating and wall mounted control.
- Comfortable carpets and underlay to your bedrooms and lounge
- Seamless transition into your showers with tiled shower bases.
- 900mm stainless steel freestanding cooker and canopy rangehood for the Chef in the family.

Package Enquiries

Call us on 1300 781 816

Price is Albury Wodonga region ONLY and · All prices quoted are for blocks up to 700m2 in local urban areas on a flat site with up to 1m of fall, and up to 'H1' type soil classification. · These prices are for the 'CASHMERE' façade. · No allowance has been made for any additional works which may be required as a result of Bushfire Attack Level, all costs to be advised after site assessment and calculation of BAL rating. · All prices are subject to change to accommodate energy rating requirements specific to the clients proposed building site, all additional costs to be advised after energy rating. · Prices are subject to change without notice.